



Fishin' for Facts: Blobfish™

Common name: blob sculpin, blobfish

Scientific name: Genus Species: "Psychrolutes phrictus"



Highlights

Little is known about blobfish. Some of what scientists have learned is from deep sea exploration from submersibles and ROVs. *Only more deep-sea research will tell.

Male blobfish *may guard the eggs. If they're not sitting on them or touching the eggs, the males are found within 9 feet (3 m) of their future babies. Scientists think males fan the eggs with their fins to remove sediment (settling sand...etc).

Size

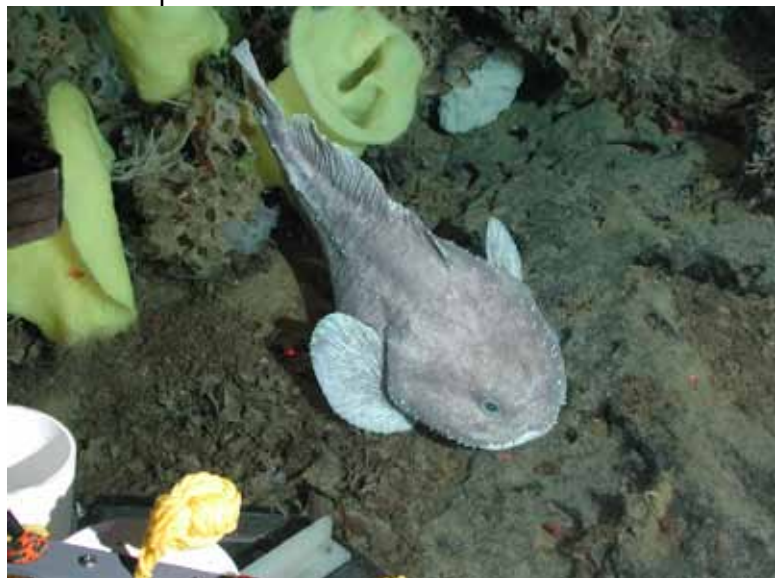
This blobfish reaches lengths up to 27.5 inches (70 cm). It weighs about 21 lb (9.5 kg).

Where are they found?

The blob sculpin is found in the Pacific Ocean off the coast of Japan and from the Bering Sea to Southern California. Deep sea, found 2753 to 9187 feet (839 to 2800 m).

What do they eat?

The blob sculpin dines on invertebrates such as sea pens, crabs, and mollusks.



Deep-sea observations via submersibles and ROVs has found that a male guarding eggs (referred to as "brooding fish") was often very close to another male and his eggs. Nesting males can be found just a boulder away [3 to 6 feet (1 to 2 m)] from another male.



*Observations of blob sculpins from a Monterey Bay Aquarium Research Institute (MBARI) ROV found that blobfish with or without eggs didn't move away from the ROV's approach.... so maybe they're just fearless or lazy blobs rather than courageous father blobs! It's more than a baker's dozen... Scientists estimated that in four egg masses, there were about 9375 to 108,125 eggs. Yowza!

Photos courtesy of NOAA/Monterey Bay Aquarium Research Inst. 2002. All Rights Reserved

Learn more about ocean animals at
WhaleTimes: www.whaletimes.org